



## Education Transfer Degree Pathway

### **Step 1: Getting Started**

- Complete admissions requirements for Middlesex County College
- Examine High School Transcript and High School GPA

**\*Becoming a teacher requires a high level of academic rigor. Students must maintain a 3.0+ GPA to become a certified teacher in the State of New Jersey.\***

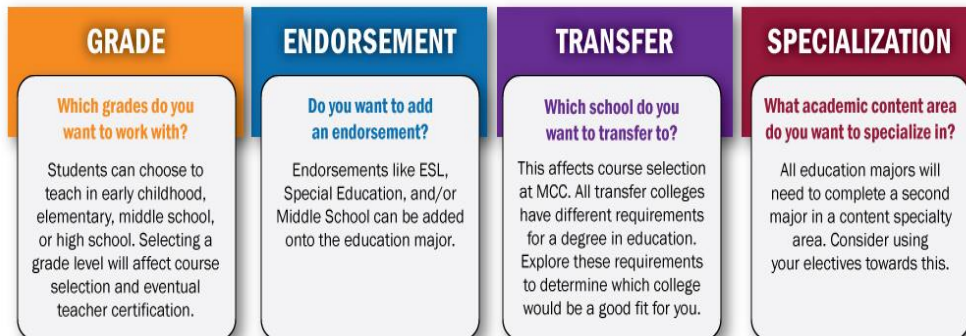
### **Step 2: Are You Ready?**

- Submit SAT, ACT and/or PARCC Scores. Take *Accuplacer* exam if necessary.
- Examine pre-requisite requirements for coursework

### **Step 3: Complete G.E.T.S. Model**

\*Your G.E.T.S. Model responses will determine coursework\*

#### **G.E.T.S. Model**



**\*= Grade, \*= Endorsement, \*= Transfer, \*= Content Specialty**

## Semester I

## Check if Completed

1. ENG 121(3)  \_\_\_\_\_
2. MAT 113 (and/or above) (3-4) \*  \_\_\_\_\_
  - Prerequisite course is MAT 014 OR qualifying SAT or PARCC scores
  - **STEM Content Specialty:** Take MAT 129 OR MAT 131
  - **Non-STEM Content Specialty-** Take MAT 113 and/or higher
3. PSY 123 (3)  \_\_\_\_\_
4. HST 221 OR 222 (3)  \_\_\_\_\_
5. SPE 121 (3)  \_\_\_\_\_

## Semester II

## Check if Completed

1. ENG 122 (3)  \_\_\_\_\_
2. EDU 121, EDU 122 OR EDU 123 (3) \* \* \*  \_\_\_\_\_
  - Prerequisite is PSY 123
  - Requires 25 filed observation hours
  - EDU 122 suggested for Early Childhood Grade Level
  - EDU 123 suggested for Special Education Endorsement
  - EDU 121- Suggested for elementary, middle and/or secondary general education
3. PSY 223 OR 255 (3) \*  \_\_\_\_\_
  - Prerequisite is PSY 123
  - Early Childhood, Elementary or Elementary with Middle School take PSY 223
  - Middle School and/or Secondary Education take PSY 255
4. Biology Course (4) (CHOOSE ONE) \*  \_\_\_\_\_
  - A. BIO 105 OR BIO 106 (Non-STEM Content Specialty) OR
  - B. BIO 117 (Physical Education Majors) OR
  - C. BIO 123 (STEM Content Specialty)

Prerequisites:

  - BIO 105 and BIO 106 require MAT 013
  - BIO 117 requires MAT 013 AND High School Lab Science OR BIO 010 OR CHM 010
  - BIO 123 requires MAT 013 AND High School Biology with Lab AND High School Chemistry with Lab OR BIO 010 AND CHM 020
5. MAT 113 (and/or above) (3-4) \*  \_\_\_\_\_
  - **STEM Content Specialty:** Take MAT 129 OR MAT 131
  - **Non-STEM Content Specialty-** Take MAT 113 and/or higher
  - Prerequisite course is MAT 014 OR qualifying SAT or PARCC scores



**Take Praxis Core after Semester II**  
**\*Passing this test is required for entry into any teacher preparation program in NJ\***

[www.ets.org/praxis](http://www.ets.org/praxis)

## Semester III

## Check if Completed

1. PSY 226 (3)  \_\_\_\_\_  
- Prerequisite is PSY 123
2. History Elective (3)  \_\_\_\_\_  
- HIS 221 OR HIS 222 OR HIS 131 OR HIS 132
3. ENG 225 OR ENG 226 (3)  \_\_\_\_\_  
- Prerequisite is ENG 122
4. Content Specialty elective (3-4) \* \*  \_\_\_\_\_  
- Please see [Academic Content List](#) to select course
5. Content Specialty elective (3-4) \* \*  \_\_\_\_\_  
- Please see [Academic Content List](#) to select course
6. HED 150 (3)  \_\_\_\_\_



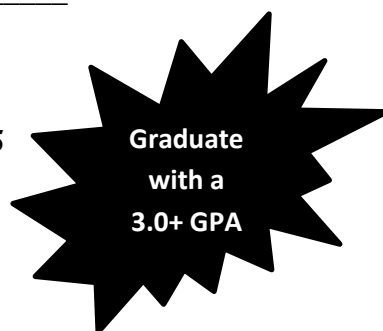
### Complete Application Package for Teacher Preparation Program(s)

\*General admissions into a college or university does not mean you are admitted into a teacher preparation program. This is a separate admissions process\*

## Semester IV

## Check if Completed

1. EDU 280 (3) \* \* \*  \_\_\_\_\_  
- Prerequisites are ONE introductory education course (EDU 121, EDU 122 OR EDU 123) AND PSY 226
2. IDC 102 AND IDC 103 (3 total credits)  \_\_\_\_\_  
- Prerequisite PSY 226
3. General Education Science elective (3-4) \*  \_\_\_\_\_  
\*Please check prerequisites in College Catalog\*
  - Non-STEM Content Specialty- SCI 155
  - Earth Science Content Specialty- SCI 155
  - Biology Content Specialty- CHM 121 + 125 OR PHY 123 + 125
  - Chemistry Content Specialty- CHM 121 + 125
  - Physics Content Specialty PHY 123 + 125
  - Math Content Specialty- PHY 123 +125
  - Physical Education- BIO 131 \*Need Waiver\*
4. Content Specialty elective (3-4) \* \*  \_\_\_\_\_  
- Please see [Academic Content List](#) to select course
5. Content Specialty elective (3-4) \* \*  \_\_\_\_\_  
- Please see [Academic Content List](#) to select course



SUCCESS STARTS HERE